



Growing Your Family with Lifetime Adoption

Our Services and Your Next Steps



All photos are
actual Lifetime
Families!

LifetimeAdoption.com | 1-727-493-0933



Hello!

We're so excited to take this next step with you! Thank you for choosing Lifetime Adoption as your partner on this journey to growing your family. Now that you've applied, and your application has been preapproved, the next step is to schedule a call with us so we can get to know you better, answer any questions, and help you move forward with confidence.

Adoption is a big step, and we know it comes with a mix of emotions—from excitement to uncertainty. We want you to know that you're not alone. Our team is here to guide you every step of the way, helping you navigate the process with clarity and support.

In this packet, you'll find more details about Lifetime, our services, what birth mothers are looking for, adoption costs, and the steps ahead. Please take some time to review it, and then schedule your call with us. This conversation is a chance for us to connect, hear your adoption goals, and help you prepare for the journey ahead.

Your path to adoption is uniquely yours, but one thing remains true—we see time and again how the right child finds the right family at the right time. Every prayer, every effort, and every moment of waiting is part of a bigger picture that is leading you to the child meant for you.

We're honored to walk alongside you and look forward to speaking with you soon!

Table of Contents

- 1 THE NEXT STEP--SCHEDULE YOUR CALL
Page 4
- 2 STEPS TO ADOPTION
Page 5
- 3 THE HEART OF LIFETIME
Page 6
- 4 WHY FAMILIES CHOOSE LIFETIME
Page 7
- 5 HELPFUL ADOPTION FACTS
Page 8
- 6 SERVICES, SUPPORT, & PROGRAM OPTIONS
Page 9-10
- 7 PLANNING FOR ADOPTION COSTS
Page 11-13
- 8 HOW LONG DOES IT TAKE TO ADOPT?
Page 14
- 9 COMMON QUESTIONS
Page 15-16
- 10 HELPFUL LINKS
Page 17



CONTACT DETAILS:

LifetimeAdoption.com

Call or Text

Office: 727.493.0933

Email

apply@lifetimeadoption.com

6640 Congress St

Suite 101

New Port Richey, FL 34653

OFFICE HOURS

Call/Text 24/7 for Birth Mothers & Adoptive Parents who are matched

General Hours:

Monday-Friday, 7:30am - 5pm ET

SOCIAL MEDIA

FB/IG: [@lifetimeadoptioncenter](https://www.facebook.com/lifetimeadoptioncenter)

TikTok: [@lifetime.adoption](https://www.tiktok.com/@lifetime.adoption)

YouTube: [@LifetimeAdoption](https://www.youtube.com/LifetimeAdoption)

What's the next step?

Schedule Your One-on-One Call Today!

Your application has been preapproved, and the next step is to schedule your one-on-one video or phone call with us.

During this call, we'll connect personally to learn more about your adoption goals, answer any questions you may have, and check for an available opening in our program that aligns with your needs.

We offer flexible scheduling Monday through Friday, including same-day appointments. To request a same-day call, please call us directly at (727) 493-0933.

We look forward to speaking with you soon!

SCHEDULE YOUR CALL



Have more questions before you schedule?
Contact us Monday-Friday during regular
office hours to connect.



727.493.0933

apply@lifetimeadoption.com

LifetimeAdoption.com



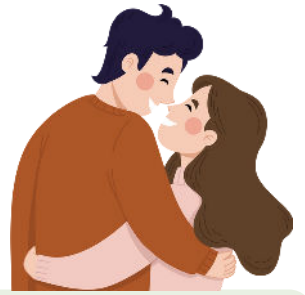
Steps to Planning Your Adoption



1

Apply

- Submit your **FREE** application
- Receive a response within 1-5 business days.
- Review exclusive Adoption Education materials.
- Meet with a Lifetime coordinator to discuss your adoption desires and questions.
- Receive your acceptance into Lifetime's Proven Program.



2

Begin Your Program

- Join the thousands of families who've partnered with Lifetime on their journey to a safe and successful adoption.
- Use Lifetime's suggested home study providers to select a provider and begin your home study with a licensed social worker.
- Complete your adoption profile and video with Lifetime's support, resources, and guidance.

3

Wait to be Chosen by a Birth Mother

- Lifetime's nationwide outreach program will share your family profile with birth mothers who match your adoption criteria.
- Prepare your home for your baby.
- Access Lifetime's exclusive library and learning opportunities that cover adoption from A-Z.
- Stay plugged in through your monthly check-ins and webinars.

4

Match with a Birth Mother

- Learn about the woman who has chosen you as the family for her baby.
- Receive medical information regarding the health of her pregnancy and baby.
- Connect with the birth mother through a phone or video call.
- Agree to match.
- With Lifetime's guidance, you'll build a foundation for a healthy relationship with your child's birth mother.

5

Retain a Legal Professional

- Use Lifetime's suggested legal professionals to receive guidance for a legal and ethical adoption.
- Lifetime will continue to guide you and birth mother through the adoption process step-by-step.

6

Travel to Your Baby

- Meet the birth mother in person. She's no longer a stranger: She's your child's birth mother and is eager to meet you and introduce you to your baby.
- Meet your baby and fall in love!
- Begin bonding with your baby and await clearance to return home together.

7

Finalize your Adoption

- Complete the post-placement steps with your home study social worker.
- With your attorney, petition the court and attend your adoption hearing.
- Celebrate becoming an "official" family.

The Heart of Lifetime



How Lifetime Adoption began:

In 1986, Mardie Caldwell founded Lifetime Adoption. Her personal journey to parenthood through adoption came after years of infertility and seven miscarriages. Mardie's experience also led her to become a renowned expert in open adoption and award-winning published author. Lifetime has remained a leader in modern adoption nationwide, innovating and setting standards of service and care for all involved in the adoption process.

Scan below or click to watch a video from Mardie about Lifetime's roots.



or go to [Bit.ly/LifetimeStory](https://bit.ly/LifetimeStory)

Since 1986, families have turned to Lifetime to help them welcome a child to their lives through adoption. One of the biggest compliments is getting to serve returning families for their second or even third adoptions! Our consistent success rate speaks for itself. Lifetime has helped thousands of families find the baby of their dreams, and we welcome the opportunity to help you too!

Here at Lifetime, we provide adoptive parents with a step-by-step, guided approach, where we keep the lines of communication open with all parties as we plan adoptions together. We have an extensive nationwide outreach program and 24-hour support for birth mothers -- which keeps us very busy after normal business hours, and on the weekends and holidays, when many other adoption offices are closed.

Through the years, adoptive parents, birth mothers, and other professionals involved in our cases have shared that it is so refreshing to work with Lifetime's staff, since we are so easy to reach for help. And Lifetime's adoptive parents are often praised for being well prepared and easy to work with through the hospital and legal experience of the adoption process.

Our heart is for helping birth mothers and hopeful parents connect, to start a loving story through a child's open adoption. Each adoption is unique and beautiful, and yours will be too. We are eager and equipped to help your adoption plan continue to move forward!

Why Families Choose Lifetime

1 Experience with Heart

Adoptive parents appreciate knowing that our founder, Mardie Caldwell, is an adoptive mom, herself, who founded Lifetime in 1986, creating a program that truly meets the needs of adoptive parents. Our decades of experience give us the ability to protect all parties with a safe and ethical approach.



2 Birth Mother Focus and Low Reclaim Rate

Quality birth mother support means more stable adoption plans for our adoptive parents. When a birth mother is given the support, education and space to make her own informed decision about adoption, she is more likely to follow through with her choice and see her child's adoption as a positive experience. When you're chosen by a birth mother you'll want to know she came to this plan willingly, fully informed, and feeling cared for and empowered to make a choice she believes is best for her child in the long term.

3 Established Nationwide Outreach

The birth mother who will choose you for her baby may not be local to you. She may be researching adoption online, or be connected to us through a medical professional local to her. Lifetime has a large online presence, and has built relationships with medical staff and other professionals nationwide. Lifetime's coordinators receive multiple intakes from new birth mothers on a daily basis, from all across the country. We have completed adoptions in every state! Our established, nationwide outreach means that we're able to create adoption plans that meet the needs of adoptive parents and birth mothers, with minimal barriers.

4 Exceptional Support and Communication

Lifetime has multiple teams to guide you through each stage of your adoption, including profile and video help, outreach and education, and after-hours staff. You'll also have a primary support coordinator to help you become, and stay, ready to adopt. Once you're matched and traveling to your baby, you'll also receive Lifetime's 24/7 support. With Lifetime, your child's birth mother will receive 24/7 support, from first contact, on into the future and even after the adoption.

5 A Faith-based Approach

Lifetime is Christian based, something that many families and birth mothers greatly value. Our faith and values are woven through every aspect of our service to our clients.



Helpful Facts:

- With modern adoption, it is the birth mother who chooses the adoptive parents for her baby. There are a variety of factors that can affect this, including your adoption preferences. It is for this reason that we cannot speculate how long it will take until a birth mother chooses you. We have seen matches occur within a few months and others stretch to two years and sometimes even more. We want adoptive families to be ready to say YES when presented with an opportunity. With Lifetime, you are not a number on a list.
- Our reclaim rate is only 4-6% (while the national average is above 20%).
- We daily receive initial calls from expectant mothers and others considering adoption.
- At any given time, more than 200 women are exploring adoption options through our caring and compassionate birth mother support and screening program!
- There is no obligation or fee with our application process.
- We have an A+ Better Business Bureau rating and have been accredited with the Better Business Bureau for many years.
- Adoptive parents who follow our guidance are satisfied and successful with their adoptions!
- Most adoptive parents at Lifetime adopt a healthy, newborn baby, since most Lifetime birth mothers plan for the adoption during pregnancy. We rarely see special needs adoption cases.
- Lifetime guides you through each step with customized profile development assistance, qualified referrals for home study and legal services (as applicable to your unique adoption needs), and counseling for your birth mother.
- Lifetime cares about, educates, and supports birth mothers, so a birth mother is equipped to make an adoption plan she is confident in, leading to a safer and healthier adoption plan for everyone, that will last a Lifetime!



Lifetime Adoption Services for Adoptive Parents

The Lifetime standard of care and support for adoptive parents and placing parents offers full adoption services through each step, with program options to meet your needs. Below is an overview of each adoption program.

EVERY LIFETIME PROGRAM PROVIDES:

- Personal adoption coordinator while you wait & prepare for your match
- Personal adoption match coordinator, once a birth mother chooses you
- Live bi-monthly support webinars, education, and preparation for each step
- Private access portal to securely manage your adoption progress
- Private membership website, exclusive to Lifetime families
- Birth mother screening and Birth Mother Blessings Program
- Nationwide 24/7 birth parent call or text availability including 24/7 match support
- Hospital notification and preparation, including requesting hospital policies and accommodations (*if available*).
- Step-by-step guidance throughout your match, the hospital, and your entire journey
- Third-party & peer counseling for birth mothers, before and after adoption
- Immediate availability (*for active families*) to be presented to Birth Mothers with a temporary profile
- Tools for personal networking to expand your reach
- Home study and adoption attorney referrals in every state
- Nationwide outreach & adoption education to connect with potential birth mothers
- Post-adoption support & availability

BRONZE PLAN

\$24,000

All of the Lifetime Services, PLUS:

- Personal Access to Lifetime's Website to create & maintain your family's online profile with the assistance and guidance of our experienced team.
- Step-by-step website, video, & profile help, tips, samples, with one-on-one support.

SILVER PLAN

\$31,000

All of the Lifetime Services, PLUS:

- Experienced Lifetime Coordinator to write, design, & create your family's profile including website, video, & profile PDF. You'll work with our team who will guide you as you provide the photos and information we need to make all of your presentation materials!

GOLD PLAN

\$42,000

All of the Lifetime Service, PLUS Silver Plan Profile & Website Services, PLUS:

- Custom website with a unique URL (link), in addition to your Lifetime website
- In-person help and support from a Lifetime Coordinator who will travel to be with you and the birth mother at the hospital when baby is born (*or when meeting with a child already born*).



Lifetime's Built-In Payment Protection Plan

*Protecting your investment in adoption
with no hidden costs or surprise fees*

At Lifetime, we believe that pursuing adoption shouldn't come with financial anxiety. That's why we've designed our flat-fee program to provide families with a "Built-In Payment Protection Plan."



**PAYMENT
PROTECTION
PLAN**

Here's what that means for you:

- **Your payment is protected.** If an adoption doesn't go through, we won't ask you for additional fees to try again. You'll continue working with us toward the child God has for you—no surprise charges, no restarting the process from scratch.
- **You're not paying for someone else's journey.** Some agencies offer "protection plans" that seem comforting at first—but often those plans come at a cost to you. They typically require families to pay more upfront (sometimes \$10,000 or more in pre-match fees), and that extra money may be used to offset other clients' failed adoptions. At Lifetime, we think you should only pay for your adoption, not someone else's.
- **Lifetime minimizes your financial risk.** While most birth moms in the United States do need assistance with their Pregnancy Related Expenses (PRE), the PRE for Birth mothers working with Lifetime average around \$5,000 in total (not monthly)— which is a fraction of what many other programs charge (typically PRE with other adoption professionals can be \$20,000 and higher. Combine that with Lifetime's lower-than-average failed adoption rate, and you've minimized the financial risk in your adoption, simply by partnering with Lifetime Adoption, an agency that provides common-sense screening, and experienced, compassionate support, which yields more safe and successful adoptions.

Lifetime provides honest pricing, continued service if a match doesn't work out, and a flat fee that puts your family and your adoption dream, first.

Wrap-Around Support

With Lifetime Adoption, you're not on your own. Our entire staff works closely together to ensure that each family and birth mother we serve is getting the help and support needed. We have dedicated teams to help with each part of your adoption, from your first contact with Lifetime, to the moment you successfully adopt.



1 Adoptive Family Support

You will have a personal adoption coordinator as your primary point of contact while you're preparing for and waiting to be chosen for your adoption match. She will manage your records, provide home study referrals, and connect with you for monthly check-ins (as well as in-between check-ins when needed!). In addition, this team provides bi-monthly webinars to keep you prepared and encouraged while you wait.

2 Birth Mother Support

Lifetime's adoption coordinators assist the women who are thinking about adoption for a baby or choosing to make an adoption plan. They provide support to birth mothers 24/7! Once you have been chosen by a birth mother, you'll work together with the birth mother coordinator to complete the adoption. Birth mother coordinators also work closely with attorneys, hospital staff, and more, to help the adoption process go as smoothly as possible, for all involved.

3 Website & Profile Support

This team will assist you with creating your online adoption profile, expanded PDF/Digital Profile, and a short video, so that birth mothers can learn more about you.

4 Adoption Outreach Support

This important team works behind the scenes to promote adoption awareness, provide education and training to healthcare and adoption professionals, and to create modern resources for women facing pregnancy options.

Planning for Adoption Costs



Lifetime has a flat fee with payment plan options. We have no other adoption fees once you are in the program. Your fee is not based on a specific birth mother, which allows your fee and program to remain secure if a birth mother decides to parent. We continue to pursue your successful adoption with no added fees. There are also no hidden fees. Adoptive parents can know Lifetime's flat fee in advance, plan a budget, and stay within the budget they've selected for the adoption.

Lifetime focuses on working with expectant mothers within our proven, nationwide outreach and screening process, matching the adoptive family, and continuing to guide each party through to the successful adoption. This even includes assistance and support after the adoption is complete. Once a match is made, we coordinate your entire adoption, working closely with attorneys and home study providers, as well as with the hospital, doctor, or counselor helping the birth mother, and other professionals needed to make your adoption dreams come true. Lifetime is the hub of your adoption, walking with you and your child's birth mother, step by step, from the beginning, through to your successful adoption.



FUNDING YOUR ADOPTION

Most adoptive families use a variety of ways to fund their adoption, including:

- Savings
- Fund-raising and crowd-funding
- Low interest adoption loans
- Credit
- Grants
- Side work
- Lifestyle adjustment to save
- Employer benefits
- Adoption Tax Credit

*For funding resources,
click here:*

LifetimeAdoption.com

An additional benefit with Lifetime is one-on-one access to an adoption finance coach to help you apply for grants, secure adoption funding, plan your budget, and more!

Please note, with Lifetime's nationwide program, it's normal for adoptive parents to be chosen by a birth mother who lives in another state. You will also need to budget for your travel to the birth state, keeping in mind that it can take 7-10 business days to get clearance to bring your baby home across state lines, for the purposes of adoption.

Your complete adoption budget should also include legal expenses, home study, and pregnancy-related expenses.

Your Adoption Budget

HERE IS A LOOK AT SERVICES NEEDED FOR A SUCCESSFUL ADOPTION:

HOME STUDY: Usually families need to budget between \$2,000 and \$4,000 for the home study. Ask the home study provider about required classes and fees, as well as fees for post-placement visits with the Social Worker. Lifetime provides home study referrals to our contracted families. Once you have started your program, please let your coordinator know if you'd like to receive our referrals. Lifetime can accept your existing home study if you are already home study approved for a private, domestic, interstate adoption. We have assisted many families with existing home studies. If you have not yet started your home study, that is perfectly fine! Lifetime does not require a completed home study to apply with us. We can discuss the timing with you and help you plan.

LEGAL: An average range of legal costs is \$7,000 to \$15,000, but can vary greatly by state. Once matched, we will make a referral to the right legal services needed in the birth state, and/or your state (every adoption is different). Your adoption may require an attorney and/or agency (perhaps instead of an attorney), or possibly separate representation for the birth mother, which is why there is a range in expected cost.

PREGNANCY-RELATED EXPENSES: As part of your preferences, you set your budget for pregnancy-related expenses. In some cases, a birth mother may need help with living expenses or to pay for medical care before or after she places her baby for adoption.

We strive to keep pregnancy-related expenses to a minimum, and currently the average total is approximately \$5,000. In comparison with other adoption professionals, Lifetime is very conservative and sees lower amounts in our adoptions. We help birth mothers to apply for government services (medical, food, housing), and also send her food, clothing, and household items through our Birth Mother Blessings program (funded through Lifetime Adoption Foundation).

Typical living expenses allowed by most states can include insurance copays, help with rent or utilities, cell phone bill or prepaid minutes, and transportation. These expenses are itemized, line by line. To distribute these expenses, you'll first send the funds to your attorney, who will then make payment directly where it is needed (such as to her landlord or doctor's office), on behalf of the birth mother.

Of course, Lifetime Adoption abides by any state laws that provide structure or limitation for pregnancy-related expenses.

Your Adoption Budget continued...

MISCELLANEOUS: There will be other things to budget for as you go through the adoption process, such as professional photography for your presentation materials and travel expenses for when you meet your child's birth mother or get to adopt your baby.

Costs will vary depending on where you live, where your baby is born, and the circumstances of your match.

LIFETIME'S TYPICAL TOTAL ADOPTION COST

\$45,000-\$50,000



A safe, legal, and ethical adoption involves many factors, and requires the services of multiple professionals to help bring your baby home. It is important to take appropriate legal steps to make sure your child's adoption is secure. Lifetime does everything possible to help adoptive parents avoid unnecessary financial risk, while still providing premium quality support and services to all parties.

Sample Adoption Budget

Lifetime Fee for Bronze Plan	\$24,000
Home Study Fee	\$3,000
Attorney Fees, once matched with a birth mother (including interstate adoption fees and finalization)	\$15,000
Pregnancy Related Expenses (rent, copays, and transportation to doctor)	\$6,000
Total Adoption Cost	\$48,000



How long does it take to adopt?

How long does it take to get ready to adopt?

Much of your initial adoption progress depends on you and how quickly you are able to complete the necessary steps. Lifetime adoptive families are expected to have an approved home study and their birth mother presentation pieces completed within the first few months of becoming a Lifetime family.

Upon starting Lifetime's program, motivated adoptive families take:

- 2-7 days to complete your scheduled Welcome Call & set up your personal Lifetime Portal
- 1 week to start being shown to birth mothers if you have paid in full and take advantage of Lifetime's Temporary Profile option. You can be shown to birth mothers while your home study is in progress.
- 4-10 weeks to complete your adoption home study
- 3-8 weeks to create your complete online and expanded digital profile, and video for birth mothers

Waiting for the right adoption match takes timely preparation, faith, and patience. The phrase, "hurry up and wait," is so true when it comes to adoption! In the beginning, you'll work on a LOT of requirements to get officially ready to adopt. Then, you'll wait for the birth mother who will come alongside you in this adoption journey. While there are many aspects outside of your control in waiting to adopt, there are things you CAN do to ensure nothing is waiting on YOU.

When you connect with or read about other adoptive families and how long they waited to adopt, remember there is often more to the story that you may never know. For instance, some families wait a long time because they took a long time to complete the basic steps to become ready to meet potential birth mothers. Other times, adoptive parents may have taken shortcuts that ultimately caused delays in the long-run, or they may have actually declined a great opportunity to match, but chose to continue waiting.

While waiting to adopt is often thought of as long, there are many times when adoption happens quickly, especially for proactive families. It's important to become adoption ready quickly, so that you're truly ready and able to say YES when you're chosen to adopt a baby. Most families in Lifetime's program adopt within two years of becoming active. We've seen again and again that there is a meant-to-be factor in each adoption, and it's just a matter of time for most hopeful adoptive families. We believe there is a baby for each family who truly wants to adopt!

Common Questions:

What is the fee schedule?

Lifetime offers a two-part payment plan option to begin accessing our profile creation services, educational resources and support, and home study provider referrals. Lifetime's flat fee is due in full before you'll be considered an "active family," able to be shown to birth mothers. Most home study providers require payment before they will begin the process, however you will not need to pay an attorney or any birth mother living expenses until you are matched.

What happens if we're matched and the birth mother changes her mind?

Our desire is to help you reach your adoption goals and welcome a baby into your family. If a birth mother has a change of plans about her baby's adoption, Lifetime will continue to work with you toward another match, at no additional fee to Lifetime.

Is there a fee to apply?

No. Lifetime's application process is free to you! Our application process can be completed entirely online and at your own pace. We prefer not to accept any fees unless we are confident we can help.

What are you looking for when you review adoptive parent applications?

Lifetime works on an opening basis, which means we cannot accept every family who applies. We accept new families based on our recently completed adoptions. Rather than having a set list of requirements for our program, we review each application as a whole, taking into consideration the adoptive family's characteristics, along with their adoption preferences. It's important for Lifetime to partner with families who meet what birth mothers are often seeking. When a family truly meets what a birth mother is seeking in adoptive parents for her baby, she is far more likely to feel content and empowered throughout the adoption experience, and for many years to come. When it comes to your adoption preferences, being very narrow or selective can keep us from realistically expecting success, and we don't want to accept anyone's time or money if we are not confident we can help. Our selection process is a key part of Lifetime's legacy of success for thousands of adoptive parents. Of course, as we review applications, we must consider basic adoption requirements, such as minimum legal age to adopt, prior convictions, etc., that may limit a family's ability to become approved to adopt.

Will Lifetime allow us to work with additional agencies to help us find a match?

Yes! All of Lifetime's resources and support are available to help you with any possible adoption match that comes your way. Let us know if you are working with multiple programs, so we know how to help.

Common Questions:

Do we need to have a completed home study before we apply?

You do not need to have your home study done (or even started) before you complete Lifetime's application. In fact, Lifetime has an extensive list of quality home study providers, nationwide. Once you have started your program, we will be happy to provide you with a referral to a provider.

If my application is approved, does that mean we are obligated to work with Lifetime?

Our application doesn't obligate you to partner with Lifetime. You can take time to decide what's right for you. The application is a great next step in your research and adoption planning or exploration, and provides you with access to an adoption coordinator, and helpful adoption resources.

Is there another fee once we're matched with a birth mother?

Lifetime does not have "match fees" for you to pay upon being chosen by a birth mother. However, once you're matched you will need to hire legal professionals to assist with the required paperwork to complete your adoption, terminate the biological parents' rights, etc. You should not hire an attorney before you know more about the specific birth mother who wants to match with you. Lifetime will also provide trusted, experienced referrals for adoption attorneys and professionals needed to help you and the birth parents have a safe and legal adoption process.

What happens when our application is approved? What's the next step?

Pre-approved applicants will be provided with a complimentary, scheduled, one-on-one, video or phone call with one of Lifetime's adoptive family coordinators. During this conversation, your coordinator will help you establish your adoption preferences, answer your questions, and learn more about your personal circumstances and adoption needs. This is a time for you and Lifetime to get to know each other, and explore what a Lifetime Adoption could look like for you. From there, Lifetime will let you know if our program is a good fit to help you reach your adoption goals. If so, your coordinator will provide you with Lifetime's paperwork, your next steps for beginning the process, and adoptive family references who have volunteered to share their experiences with new hopeful adoptive parents. Lifetime works on an opening basis, and will only offer to assist in your adoption if we are confident our program is in the best interests of your adoption goals.



Helpful Links

[Funding Adoption: How to afford adoption costs](#)

[Your Home Study: What to expect, services, and more](#)

[Birth Parents Seeking Families: Current situations at Lifetime](#)

[The Steps to Adoption: How the process works](#)

[Frequently Asked Questions About Lifetime](#)

[Lifetime's YouTube Channel](#)

[Lifetime Adoption Webinars](#)

[Adoption Articles & Stories for Adoptive Parents](#)

[Adoption Success Stories \(come see our families' Lifetime babies!\)](#)

[Called to Adoption: Mardie Caldwell's book for hopeful adoptive parents](#)

[So I Was Thinking About Adoption: Book for expectant mothers](#)

[More Adoption Resources](#)



Thank You for Considering Lifetime Adoption

We look forward to learning more about you!



LifetimeAdoption.com | 727-493-0933

Personal online calendar: LifetimeAdoption.com/schedule